



**MASL**  
WORLD

**CASESTUDY**



Geospatial Revolution:  
**MASL established GIS  
Labs for Enhanced Border  
Security**





**MASL**  
WORLD



## **THE CLIENT**

The esteemed client, the Indian Para-Military Force, stands as the forefront guardian of India's border security. Committed to maintaining the nation's territorial integrity, IPMF operates in challenging terrains and demanding scenarios. The force's dedication to excellence and unwavering commitment to safeguarding the borders necessitated the adoption of cutting-edge technologies, such as Geographic Information Systems (GIS).

This initiative aligns with its vision to leverage advanced tools for strategic decision-making, resource optimization, and bolstering overall operational efficiency along the extensive national borders.





## THE CHALLENGE

### **Legacy Infrastructure:**

- Outdated IT infrastructure posed challenges in handling GIS applications.

### **Network Integration:**

- Seamless integration of GIS with the existing BSF WAN network.

### **Scalability:**

- Designing a scalable and secure IT architecture to support GIS operations at 137 units.





## THE SEARCH



**MASL**  
WORLD

In pursuit of an advanced solution to elevate operational capabilities, the Indian Para-Military Force (IPMF) sought to establish a Geographic Information System (GIS) Lab across 137 units nationwide.

The search involved identifying a partner with proven expertise in secure and scalable IT infrastructure design, GIS integration, and comprehensive hardware and software deployment.

Millennium Automation Systems Ltd. (MASL) emerged as the ideal partner, and their alliance with M/s RSI Softech India Pvt. Ltd. bolstered the project's potential for success.

The search aimed to align with IPMF's stringent requirements for GIS implementation, ensuring a seamless fusion with the existing BSF WAN network, and secure GIS application customization.





## SCOPE OF WORK

The establishment of the GIS Lab involved a multifaceted approach, demonstrating Millennium Automation Systems Ltd. (MASL) commitment to delivering a comprehensive solution.

### The key elements of the scope included:

#### **IT Infrastructure Architecture Designing:**

- Crafting a secure and scalable blueprint for the GIS Lab's IT infrastructure.

#### **Designing & Sizing of Network & IT Equipment:**

- Tailoring the network and IT equipment specifications to meet the specific requirements of the IPMF project.

#### **Integration of GIS Network with BSF WAN Network:**

- Ensuring seamless integration of the GIS network with the existing BSF WAN network.





## **Supply, Installation, Testing & Integration:**

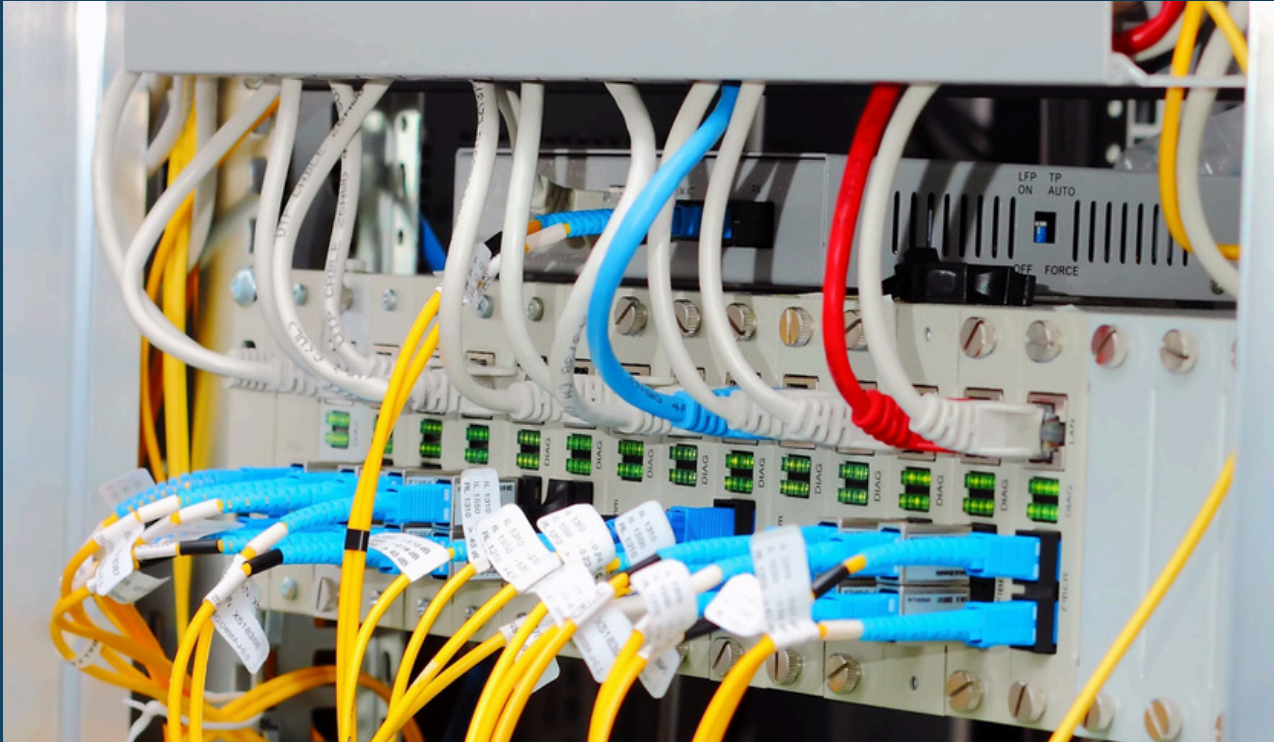
- Implementing the entire hardware and software components at 137 BSF units across India, encompassing switches, servers, storage, modems, PCs, and printers.

## **Operation & Maintenance:**

- Committing to providing ongoing operational and maintenance support for the entire GIS project for a duration of two years post-handover.

The comprehensive scope of work underscored MASL's dedication to delivering a turn-key solution that met the stringent standards and operational needs of the Indian Para-Military Force.





## **THE SOLUTION**

The solution implemented by Millennium Automation Systems Ltd. (MASL) for the establishment of GIS Labs across 137 Indian Para- Military Force (IPMF) units involved a meticulous and integrated approach.

### **The key components of the solution included:**

#### **Hardware & Software Deployment:**

- Supply, installation, testing, and integration of essential hardware components such as switches, servers, storage, modems, PCs, printers, and networking items.

#### **Network Integration:**

- Seamless integration of the GIS network with the existing BSF WAN network, ensuring a cohesive and interconnected infrastructure.







## **GIS Application Implementation:**

- Implementation and customization of GIS application software by M/s RSI Softech India Pvt. Ltd., including the utilization of ERDAS GIS software.

## **Secure WAN Backbone:**

- Leveraging the secured BSF WAN network as the backbone for the GIS project, ensuring robust and secure data transmission.

The solutions provided by MASL addressed both hardware and software facets, emphasizing scalability, security, and integration to meet the unique needs of the IPMF's GIS project.







**MASL**  
WORLD

## **THE OUTCOME**

### **Enhanced GIS Capabilities:**

- Empowered IPMF with robust GIS tools for strategic border security.

### **Seamless Network Integration:**

- Successful integration with the BSF WAN network for efficient data exchange.

### **Reliable Operation:**

- Improved overall reliability and scalability of IT infrastructure.

### **Efficient Data Handling:**

- Streamlined GIS operations for 137 units nationwide.





**This case study underscores MASL's prowess in creating a resilient GIS infrastructure, fostering enhanced operational capabilities for the Indian Para-Military Force on a national scale.**





**MASL**  
WORLD

***“Transform your business with our proven solutions and elevate to new heights”.***

**GET IN TOUCH !**



**+91 93112 40651**



**[www.maslworld.com](http://www.maslworld.com)**



**[info@maslworld.com](mailto:info@maslworld.com)**



**E 48/9, Okhla Phase-II  
New Delhi 110020**

